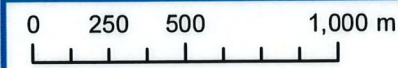
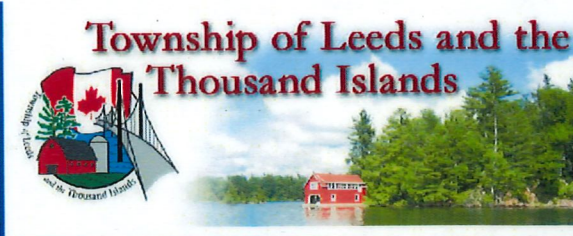
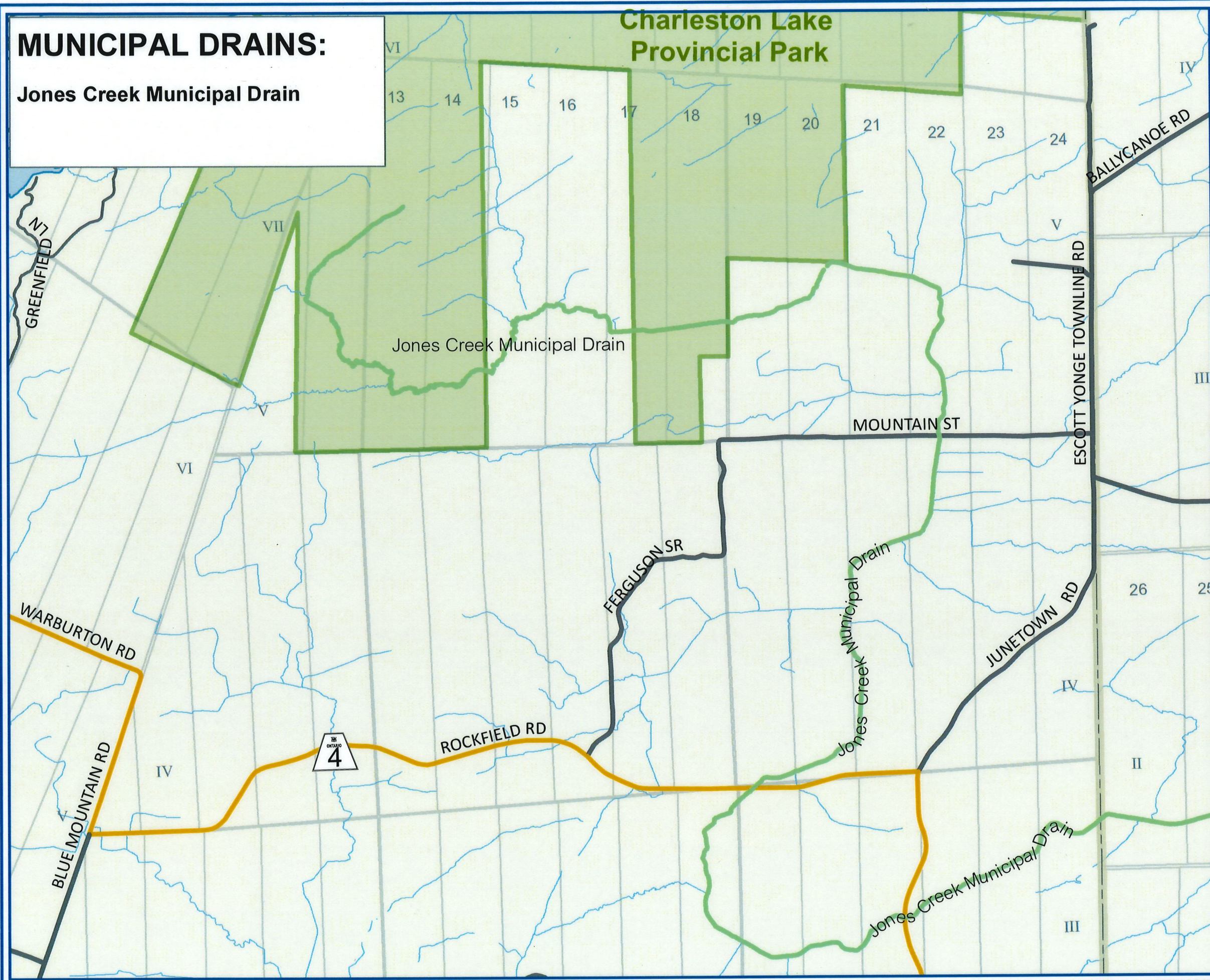


# MUNICIPAL DRAINS:

## Jones Creek Municipal Drain



- ★ Municipal Office
- 🏠 Municipal Garage
- ⊙ Hamlets & Villages
- Constructed Drain
- Provincial Hwy 4 Lane
- Provincial Hwy 2 Lane
- County Rd
- Thousand Islands Pkwy
- Municipal Rd
- Private Rd
- Railway
- ▭ Municipal Boundary
- 🌊 Water Body
- 🌊 Streams and Creeks
- 🇨🇦 National Park
- 🌲 Provincial Park
- ▭ Lot & Concession



This map is illustrative only. Do not rely on it as being a precise indicator of routes, locations of features, nor as a guide to navigation.

Designed and produced by: United Counties of Leeds & Grenville, March 2014.

Source of information: Universal Transverse Mercator, Grid Zone 18, North American Datum 1983, with data supplied under licence by members of the Ontario Geospatial Data Exchange (OGDE), and Teranet inc.

Copyright 2014, Queens Printer of Ontario

