

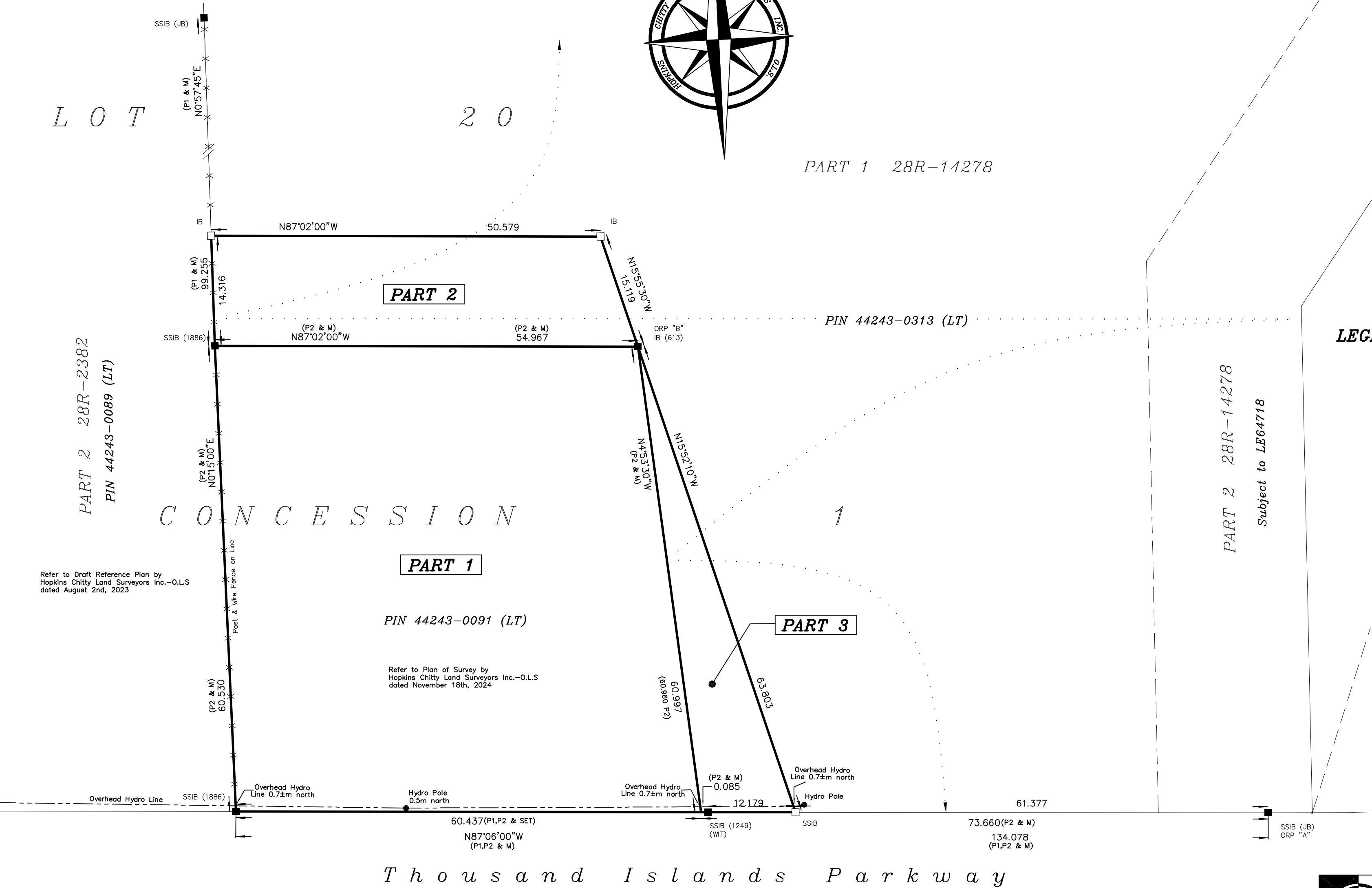
PLAN of SURVEY of
PART of LOT 20, CONCESSION 1
Geographic Township of Leeds
TOWNSHIP OF LEEDS AND THE THOUSANDS ISLANDS
COUNTY of LEEDS

SCALE = 1:400

10metres 0 10 20 30 40metres

HOPKINS CHITTY LAND SURVEYORS INC.
-2025-

THE INTENDED PLOT SIZE OF THIS PLAN IS 457mm IN HEIGHT
BY 610mm IN WIDTH WHEN PLOTTED AT A SCALE OF 1:400



OBSERVED REFERENCE POINTS (ORP'S) DERIVED FROM GPS OBSERVATIONS USING PRECISE POINT POSITIONING (PPP) SERVICE, UTM ZONE 18, NAD83 (CSRS) (2010) COORDINATES TO RURAL ACCURACY PER SEC. 14(2) OF O.REG. 216/10		
POINT ID	NORTHING	EASTING
ORP "A"	4909824.19	410188.71
ORP "B"	4909888.68	410109.98
COORDINATES CANNOT, IN THEMSELVES BE USED TO RE-ESTABLISH CORNERS OR BOUNDARIES SHOWN ON THIS PLAN.		

BEARINGS ARE UTM GRID, DERIVED FROM MULTIPLE REAL TIME KINEMATIC (GPS) OBSERVATIONS FROM MONUMENT "A" TO "B", UTM ZONE 18 (75° WEST LONGITUDE) NAD83 (CSRS) (2010)

DISTANCES ARE GROUND AND CAN BE CONVERTED TO GRID BY MULTIPLYING BY THE COMBINED SCALE FACTOR OF 0.999692

DISTANCES AND COORDINATES SHOWN ON THIS PLAN ARE IN METRES AND CAN BE CONVERTED TO FEET BY DIVIDING BY 0.3048

SCHEDULE			
PART	LOT	CON.	PIN No.
1	PART of 20	1	PART of 44243-0091 (LT)
2			PART of 44243-0313 (LT)
3			

LEGEND:

- SSIB'S PLANTED DUE TO INSUFFICIENT OVERBURDEN
- denotes Planted Survey Monument
 - " Found Survey Monument
 - SIB " Standard Iron Bar
 - SSIB " Short Standard Iron Bar
 - IB " Iron Bar
 - IB# " Iron Bar (round)
 - RB " Rock Bar
 - RPL " Rock Plug
 - (WIT) " Witness
 - (M) " Measured
 - CC " Cut Cross
 - (OU) " Origin Unknown
 - (HP) " Hydro Pole
 - (JB) " Jordan-Bennet Geomatics Inc.-O.L.S.
 - (613) " R.F. Muckelstone Ltd.-O.L.S.
 - (1249) " Martin H. Kaldeway-O.L.S.
 - (1886) " Hopkins Chitty Land Surveyors Inc.-O.L.S.
 - (P1) " Draft Reference Plan by Hopkins Chitty Land Surveyors Inc.-O.L.S. dated August 2nd, 2023
 - (P2) " Plan of Survey by Hopkins Chitty Land Surveyors Inc.-O.L.S. dated November 18th, 2024

SURVEYOR'S CERTIFICATE:

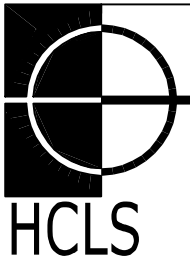
- I CERTIFY THAT:
- This Survey and Plan are correct and in accordance with the SURVEYS ACT, the SURVEYORS ACT, THE LAND TITLES ACT and the REGULATIONS made under them.
 - The SURVEY was completed on the 23rd day of July, 2025

DATE: July 29, 2025

Thomas MacDonald - O.L.S.

THIS PLAN OF SURVEY RELATES TO AOLS PLAN SUBMISSION FORM NUMBER V-

Party Chief: TJ Instrument: CU Checked By: TGM Plan By: DM



HOPKINS CHITTY
LAND SURVEYORS INC.
Ontario Land Surveyors
www.hopkinschitty.com

PROJECT No. 2025-0365
Part of Lot 20, Con 1
Township of Leeds

Thousands Islands Parkway

(See Highway Plan No. 533, M.T.O. File P-2140)

PIN 44243-0051 (LT)