

PLAN of SURVEY of
PART OF LOT 20, CONCESSION 1
Geographic Township of Leeds
TOWNSHIP OF LEEDS AND THE THOUSAND ISLANDS
COUNTY of LEEDS

SCALE = 1:400

10metres 0 10 20 30 40metres

HOPKINS CHITTY LAND SURVEYORS INC.
-2024-



NOTE:

BEARINGS ARE UTM GRID, DERIVED FROM A PORTION OF THE
NORTHERLY LIMIT OF THE THOUSAND ISLANDS PARKWAY PER (P1)
HAVING A BEARING OF N87°06'00"W, UTM ZONE 18 (75° WEST
LONGITUDE) NAD83 (CSRS) (2010) AND DESIGNATED HEREON AS
"REFERENCE BEARING".

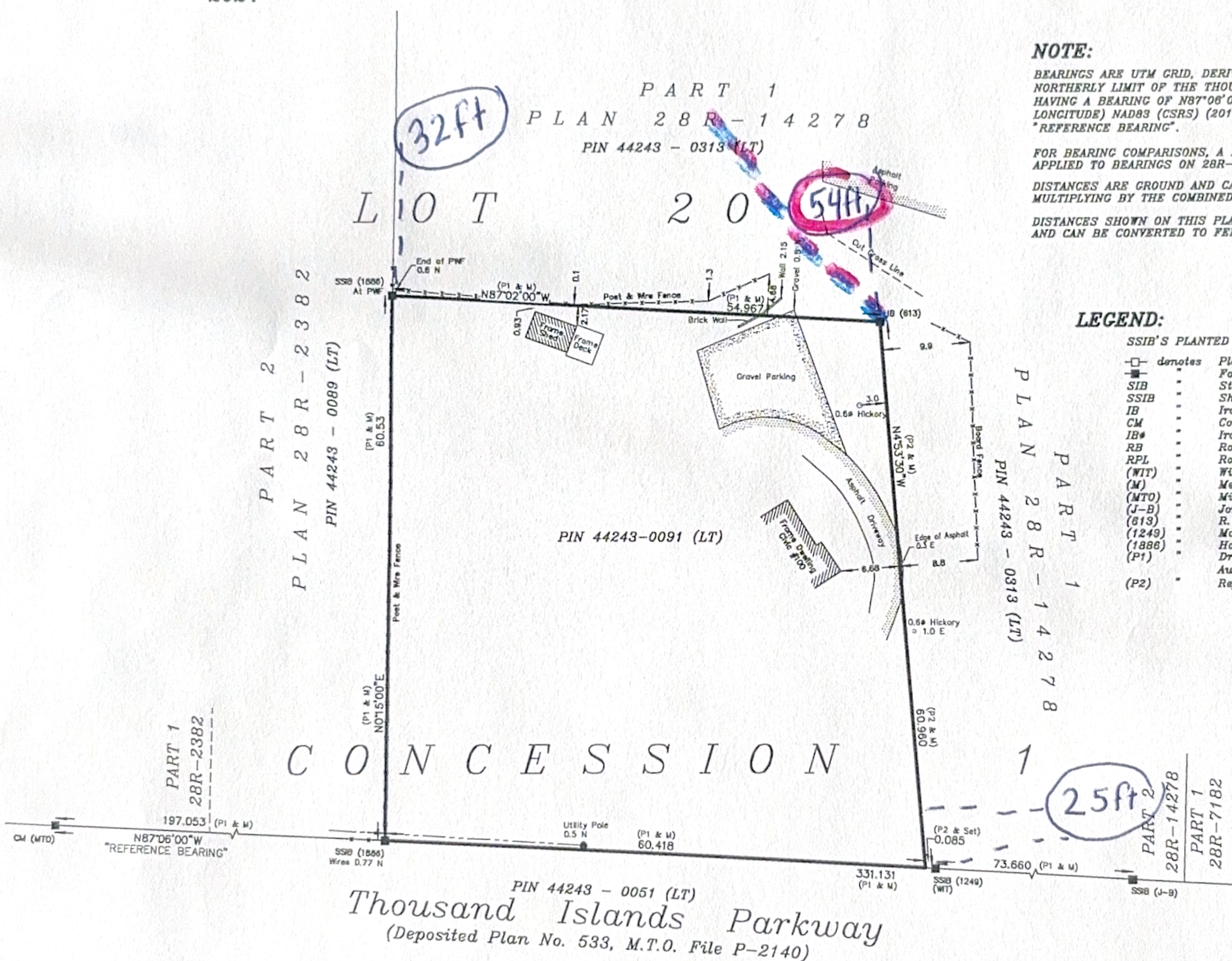
FOR BEARING COMPARISONS, A ROTATION OF 0°48'00" CLOCKWISE WAS
APPLIED TO BEARINGS ON 28R-14278

DISTANCES ARE GROUND AND CAN BE CONVERTED TO GRID BY
MULTIPLYING BY THE COMBINED SCALE FACTOR OF 0.999692.

DISTANCES SHOWN ON THIS PLAN ARE IN METRES
AND CAN BE CONVERTED TO FEET BY DIVIDING BY 0.3048.

LEGEND:

SSIB'S PLANTED DUE TO INSUFFICIENT OVERBURDEN	
□ denotes	Planted Survey Monument
SIB	Found Survey Monument
SSIB	Standard Iron Bar
IB	Short Standard Iron Bar
CM	Iron Bar
IB#	Concrete Monument
RB	Iron Bar (round)
RPL	Rock Bar
(WIT)	Rock Plug
(M)	Witness
(MTO)	Measured
(J-B)	Ministry of Transportation Ontario
(S13)	Jordan-Bennett Geomatics Inc.-O.L.S.
(1249)	R. F. Muchlstone Ltd.-O.L.S.
(1886)	Martin H. Kaldeway-O.L.S.
(P1)	Hopkins Chitty Land Surveyors Inc.-O.L.S.
(P2)	Draft Reference Plan by (1886) dated August 2, 2023
	Reference Plan 28R-14278



SURVEYOR'S CERTIFICATE:

I CERTIFY THAT:

1. This Survey and Plan are correct and in accordance with the SURVEYS ACT, the SURVEYORS ACT and the REGULATIONS made under them.
2. The SURVEY was completed on the 1st day of November, 2024.

DATE: NOVEMBER 18, 2024

PHIL W. CHITTY O.L.S.

THIS PLAN OF SURVEY RELATES TO AOLS PLAN SUBMISSION
FORM NUMBER V-88583

Party Chief: TJ	Instrument: MT	Checked By: PWC	Plan By: PP
HOPKINS CHITTY LAND SURVEYORS INC. Ontario Land Surveyors www.hopkinschitty.com			
PROJECT No. 2024-0646 LOT 20, CONCESSION 1 TOWNSHIP OF LEEDS			