

PLAN of SURVEY of PART OF LOT 20, CONCESSION 1 Geographic Township of Leeds TOWNSHIP OF LEEDS AND THE THOUSAND ISLANDS COUNTY of LEEDS

SCALE = 1:400

10metres 0 10 20 30 40metres

HOPKINS CHITTY LAND SURVEYORS INC.
-2024-



NOTE:

BEARINGS ARE UTM GRID, DERIVED FROM A PORTION OF THE NORTHERLY LIMIT OF THE THOUSAND ISLANDS PARKWAY PER (P1) HAVING A BEARING OF N87°06'00"W, UTM ZONE 18 (75° WEST LONGITUDE) NAD83 (CSRS) (2010) AND DESIGNATED HEREON AS "REFERENCE BEARING".

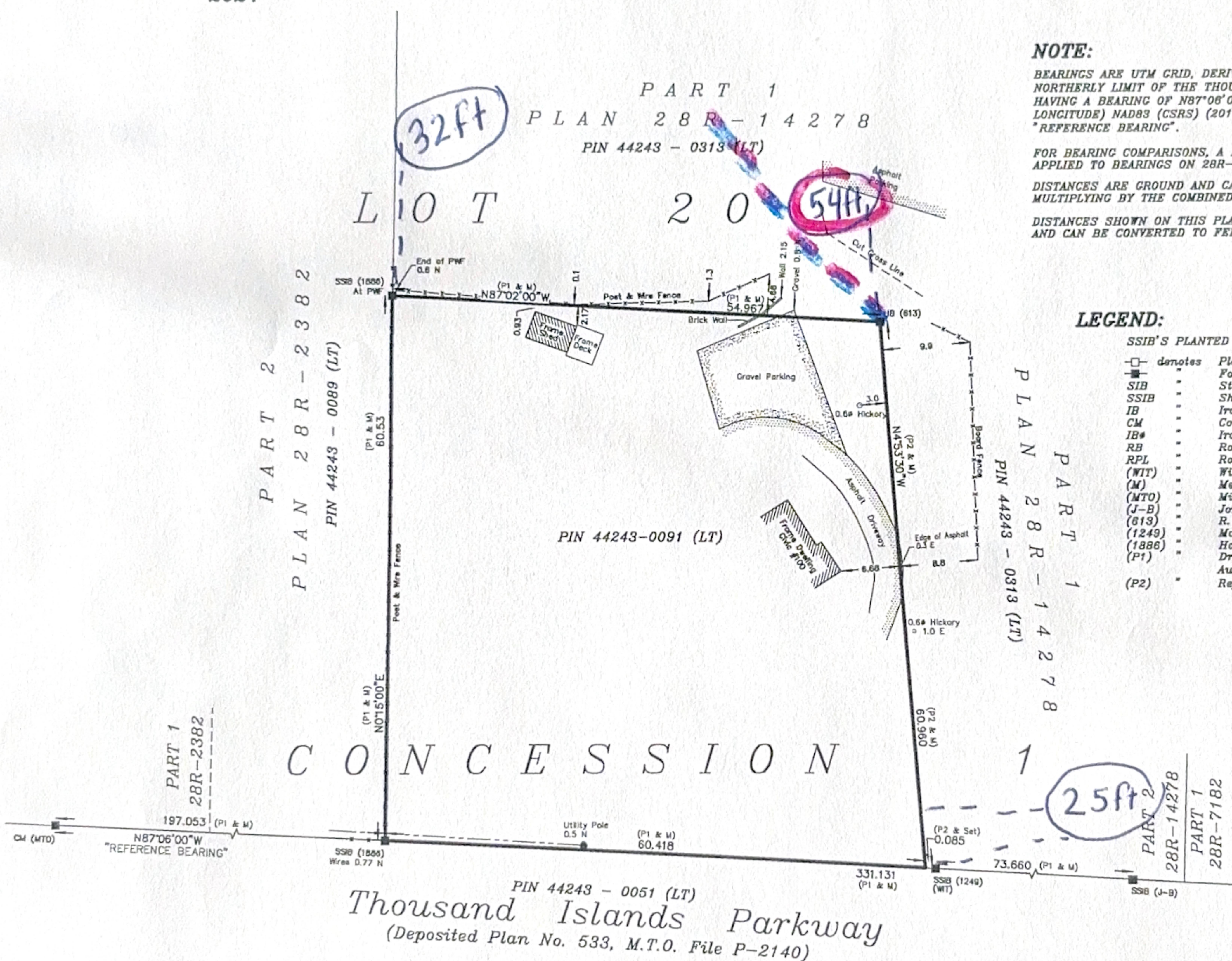
FOR BEARING COMPARISONS, A ROTATION OF 0°48'00" CLOCKWISE WAS APPLIED TO BEARINGS ON 28R-14278

DISTANCES ARE GROUND AND CAN BE CONVERTED TO GRID BY MULTIPLYING BY THE COMBINED SCALE FACTOR OF 0.999692.

DISTANCES SHOWN ON THIS PLAN ARE IN METRES AND CAN BE CONVERTED TO FEET BY DIVIDING BY 0.3048.

LEGEND:

SSIB'S PLANTED DUE TO INSUFFICIENT OVERBURDEN	
□	denotes Planted Survey Monument
■	Found Survey Monument
SIB	Standard Iron Bar
SSIB	Short Standard Iron Bar
IB	Iron Bar
CM	Concrete Monument
IB#	Iron Bar (round)
RB	Rock Bar
RPL	Rock Plug
(WIT)	Witness
(M)	Measured
(MTO)	Ministry of Transportation Ontario
(J-B)	Jordan-Bennett Geomatics Inc.-O.L.S.
(S13)	R. F. Muchlstone Ltd.-O.L.S.
(1249)	Martin H. Kaldeway-O.L.S.
(1886)	Hopkins Chitty Land Surveyors Inc.-O.L.S.
(P1)	Draft Reference Plan by (1886) dated August 2, 2023
(P2)	Reference Plan 28R-14278



SURVEYOR'S CERTIFICATE:

I CERTIFY THAT:

1. This Survey and Plan are correct and in accordance with the SURVEYS ACT, the SURVEYORS ACT and the REGULATIONS made under them.
2. The SURVEY was completed on the 1st day of November, 2024.

DATE: NOVEMBER 18, 2024

PHIL W. CHITTY O.L.S.

THIS PLAN OF SURVEY RELATES TO AOLS PLAN SUBMISSION FORM NUMBER V-88583

Party Chief: TJ Instrument: MT Checked By: PWC Plan By: PP

HOPKINS CHITTY
LAND SURVEYORS INC.
Ontario Land Surveyors
www.hopkinschitty.com

PROJECT No. 2024-0646
LOT 20, CONCESSION 1
TOWNSHIP OF LEEDS