

PLAN to ILLUSTRATE TOPOGRAPHIC INFORMATION

PART of LOT 11, CONCESSION 1

Geographic Township of Lansdowne

TOWNSHIP of LEEDS and the THOUSAND ISLANDS

COUNTY of LEEDS

SCALE = 1:1000

25metres 0 25 50 75 100metres

HOPKINS CHITTY LAND SURVEYORS INC.

-2021-



BEARING NOTE:

BEARINGS ARE UTM GRID, DERIVED FROM MULTIPLE REAL TIME KINEMATIC (GPS) OBSERVATIONS FROM MONUMENT "A" TO "B", UTM ZONE 18 (75° WEST LONGITUDE) NAD83 (CSRS) (2016)

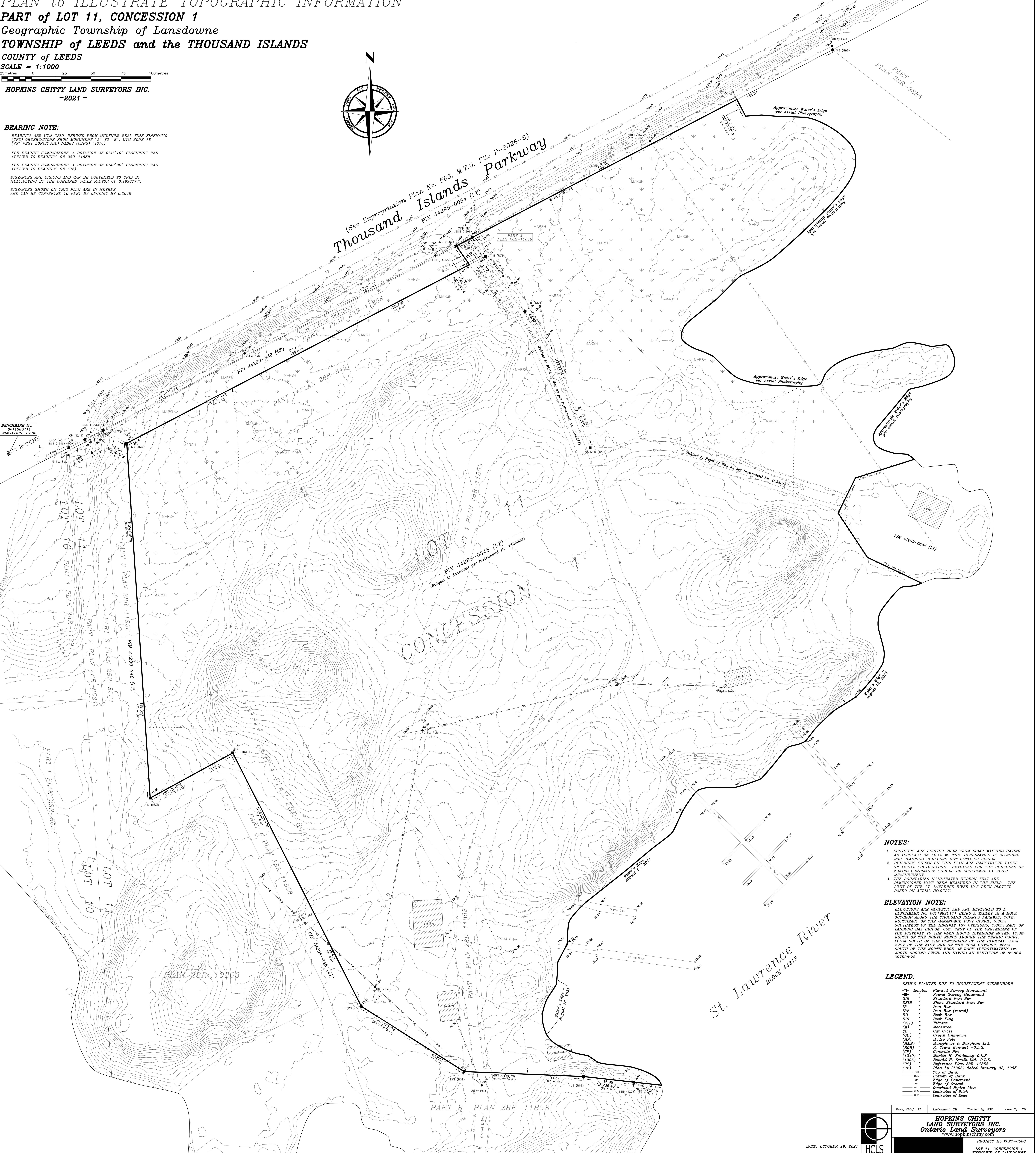
FOR BEARING COMPARISONS, A ROTATION OF 0°46'10" CLOCKWISE WAS APPLIED TO BEARINGS ON 200-11858

FOR BEARING COMPARISONS, A ROTATION OF 0°43'30" CLOCKWISE WAS APPLIED TO BEARINGS ON (P2)

DISTANCES ARE GROUND AND CAN BE CONVERTED TO GRID BY MULTIPLYING BY THE COMBINED SCALE FACTOR OF 0.99967742

DISTANCES SHOWN ON THIS PLAN ARE IN METRES AND CAN BE CONVERTED TO FEET BY DIVIDING BY 0.3048

(See Expropriation Plan No. 563, M.T.O. File P-2026-6)
Thousand Islands Parkway
PIN 44299-0054 (LT)



NOTES:

1. CONTOURS ARE DERIVED FROM LIDAR MAPPING HAVING AN ACCURACY OF ±0.15 m. THIS INFORMATION IS INTENDED FOR PLANNING PURPOSES NOT DETAILED DESIGN.
2. BUILDINGS SHOWN ON THIS PLAN ARE ILLUSTRATED BASED ON AERIAL PHOTOGRAPHS. SETBACKS FOR THE PURPOSES OF ZONING COMPLIANCE SHOULD BE CONFIRMED BY FIELD MEASUREMENT.
3. THE BOUNDARIES ILLUSTRATED HEREON THAT ARE DIMENSIONED HAVE BEEN MEASURED IN THE FIELD. THE LIMIT OF THE ST. LAWRENCE RIVER HAS BEEN PLOTTED BASED ON AERIAL IMAGERY.

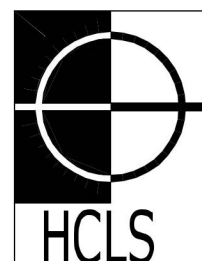
ELEVATION NOTE:

ELEVATIONS ARE GRIDMETRIC AND ARE REFERRED TO A BENCHMARK No. 0011982111 BEING A TABLET IN A ROCK OUTCROP ALONG THE THOUSAND ISLANDS PARKWAY, 10km NORTHEAST OF THE CANADIAN POST OFFICE, 6.8km SOUTHWEST OF THE HIGHWAY 127 OVERPASS, 1.8km EAST OF LANDON'S BAY BRIDGE, 65m WEST OF THE CENTERLINE OF THE DRIVEWAY TO THE CLEN HOUSE RIVERSIDE MOTEL, 17.9m NORTH OF THE NORTH FENCE AROUND THE TENNIS COURT, 11.7m SOUTH OF THE CENTERLINE OF THE PARKWAY, 6.5m WEST OF THE EAST END OF THE ROCK OUTCROP, 22m SOUTH OF THE NORTH EDGE OF ROCK APPROXIMATELY 1m ABOVE GROUND LEVEL AND HAVING AN ELEVATION OF 87.864 CVQ28:78.

LEGEND:

- SSIB'S PLANTED DUE TO INSUFFICIENT OVERBURDEN
- dangles
 - Planted Survey Monument
 - Found Survey Monument
 - SSIB Standard Iron Bar
 - SSIB Short Standard Iron Bar
 - IB Iron Bar (round)
 - IB Iron Bar (round)
 - RPL Rock Flag
 - WIT Witness
 - (M) Measured
 - CC Out Cross
 - (OU) Origin Unknown
 - Hydro Pole
 - (H2B) Humphreys & Burgham Ltd.
 - (RCB) R. Grant Bennett - O.L.S.
 - (CP) Concrete Pin
 - (1349) Martin H. Kaldeuay-O.L.S.
 - (1396) Ronald H. Smith Ltd.-O.L.S.
 - (P1) Reference Plan 200-11858
 - (P2) Plan by (1396) dated January 22, 1985
 - Top
 - 100
 - 500
 - Bottom of Bank
 - LP Edge of Pavement
 - 10 Edge of Gravel
 - OH Overhead Hydro Line
 - CLD Centreline of Ditch
 - CR Centreline of Road

Party Chief: TJ Instrument: TM Checked By: FWC Plan By: RH



HOPKINS CHITTY
LAND SURVEYORS INC.
Ontario Land Surveyors
www.hopkinschitty.com

PROJECT No. 2021-0588

LOT 11, CONCESSION 1
TOWNSHIP OF LANSDOWNE

DATE: OCTOBER 29, 2021