

Schedule A2 - Note

It is noted that the United Counties of Leeds and Grenville (UCLG) Official Plan, Ministerial Approval February 19, 2016, OMB Partial Approval March 15, 2017, Schedule A – Community Structure and Land Use, and Schedule C – Natural Heritage Features and Areas is subject to an appeal respecting the mapping of Provincially Significant Wetlands. The appeal includes mapping of all shoreline/coastal wetland areas and wetland areas within embayments along the shoreline of the St. Lawrence River, south of Highway 401 and/or the Thousand Islands Parkway from the westerly limit of the Township to at least the Rockport area, excluding the Town of Gananoque.

Schedule A2 of the Township's Official Plan is in accordance with the UCLG Official Plan designations for the Provincially Significant Wetlands which are under appeal. Once the Ontario Municipal Board (OMB) issues its Decision on the outstanding appeals on the UCLG Official Plan, Schedule A2 shall be amended to reflect the OMB Decision and to be in conformity with the UCLG Official Plan. This shall be completed by the Township through a technical amendment to the Township's Official Plan as adopted by Council and no further notice shall be required.

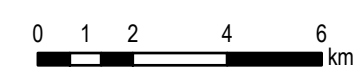


OFFICIAL PLAN SCHEDULE A2 LAND USE DESIGNATIONS: NATURAL HERITAGE SYSTEM AND HAZARDS

LEEDS AND THE THOUSAND ISLANDS
COUNCIL ADOPTION SEPTEMBER 10, 2018

UNITED COUNTIES OF LEEDS AND GRENVILLE
APPROVAL NOVEMBER 22, 2018

- Legend**
- Municipal Boundaries
 - Leeds and the Thousand Islands Boundary
 - Settlement Area Boundary
 - Provincial Highway
 - Thousand Islands Parkway
 - County Roads
 - Township Roads
 - Active Railway
 - Provincially Significant Wetlands
 - Regionally Significant Wetlands
 - Area of Natural and Scientific Interest, Earth Science
 - Area of Natural and Scientific Interest, Life Science
 - Candidate Area of Natural and Scientific Interest, Life Science
 - Environmental Protection (Applies to all land under waterbodies; see Section 5.2 of the Official Plan)
 - 30 Metre Setback from Water
 - National Park
 - Provincial Park
 - Township Parkland
 - Cataraqui Region Conservation Authority Land
 - Unstable Soils
 - Floodplain



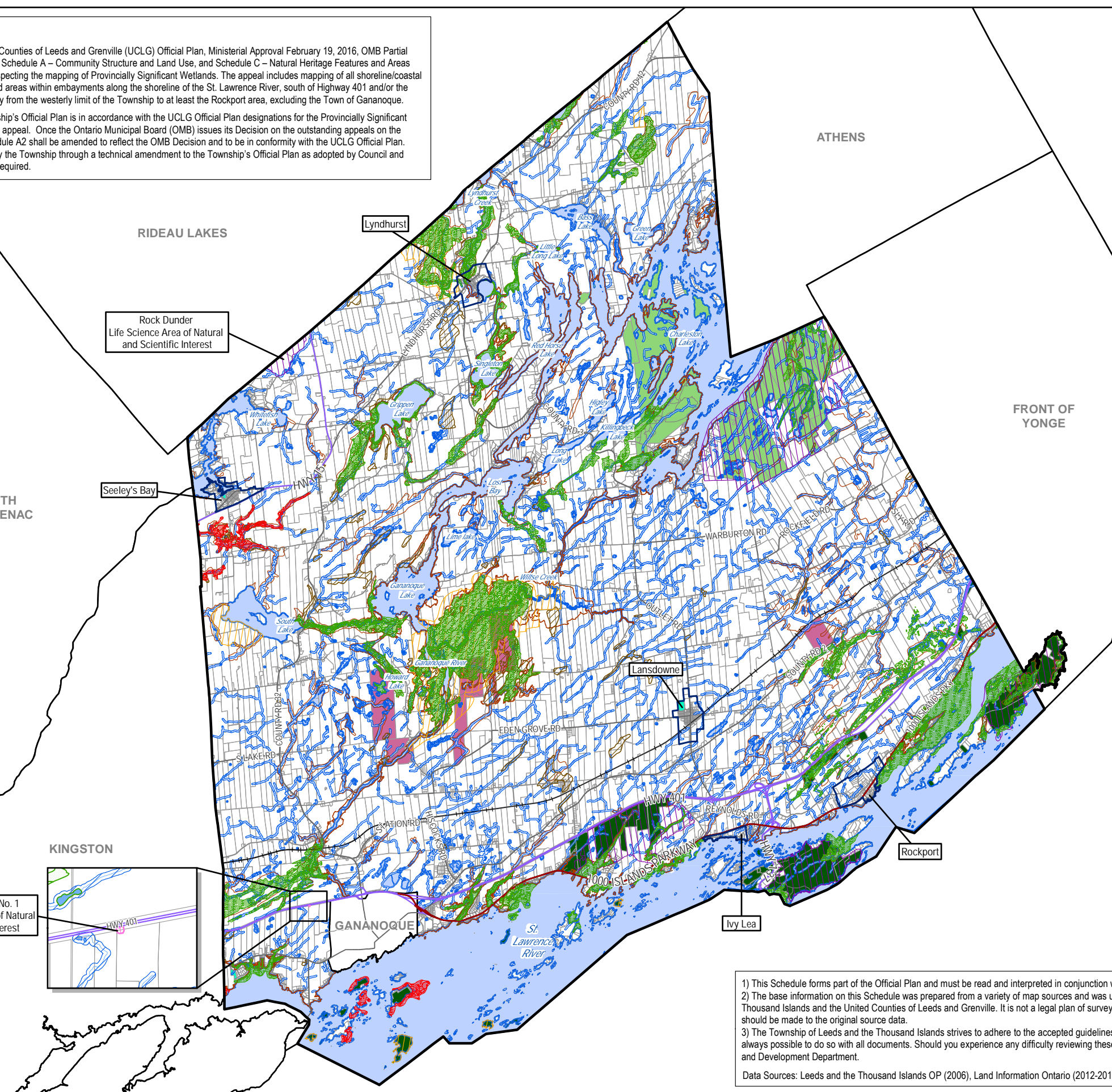
COORDINATE SYSTEM:
NAD 1983 UTM Zone 18N



September 2018

1) This Schedule forms part of the Official Plan and must be read and interpreted in conjunction with the other Schedules and the text of this Plan.
 2) The base information on this Schedule was prepared from a variety of map sources and was used by permission of the Township of Leeds and the Thousand Islands and the United Counties of Leeds and Grenville. It is not a legal plan of survey. For precise location of plan features, reference should be made to the original source data.
 3) The Township of Leeds and the Thousand Islands strives to adhere to the accepted guidelines and standards for accessibility. However, it is not always possible to do so with all documents. Should you experience any difficulty reviewing these schedules, please contact the Township's Planning and Development Department.

Data Sources: Leeds and the Thousand Islands OP (2006), Land Information Ontario (2012-2018), United Counties of Leeds and Grenville (2012-2018)



Gananoque Site No. 1
Earth Science Area of Natural
and Scientific Interest

Rock Dunder
Life Science Area of Natural
and Scientific Interest

